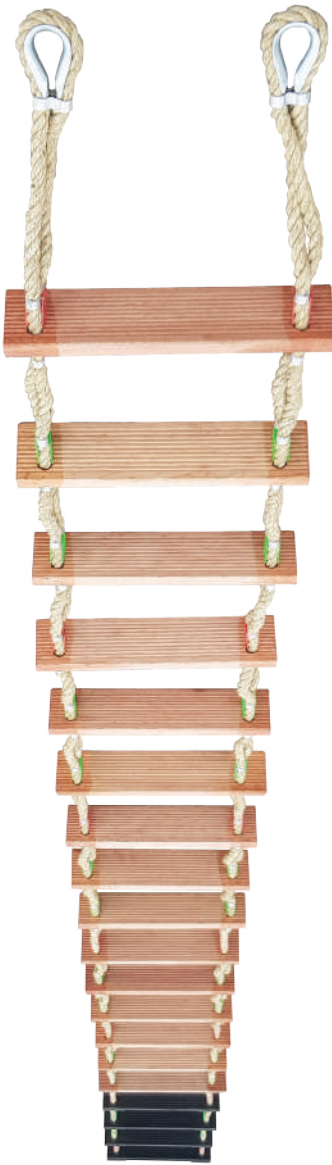


Embarkation Ladder (MED/SOLAS Approved)

Model: DMSE-EL

Lengths Available from 2m to 50m

Please Choose Bottom Structure Upon Order Confirmation



(1) Open End Type



(2) Closed End Type

Note: If none is chosen, we will proceed with option 2 (Closed End) which is more common.

Technical Specifications

Please refer to Technical Drawings for embarkation ladder's specifications.

Certifications

- **Approval:** DNV, RINA certificates
- **Testing Standards:** IMO Res.MSC.81(70), as amended; ISO 5489:2008
- **Reference Standards:** Reg. III/4, III/11, III/34 and Reg. X/3 of SOLAS 74 Convention as amended; IMO Res.MSC.48(66), IMO MSC.1/Circ.1285



Manufacturer



Dongtai Martian Ship Equipment Co., Ltd.



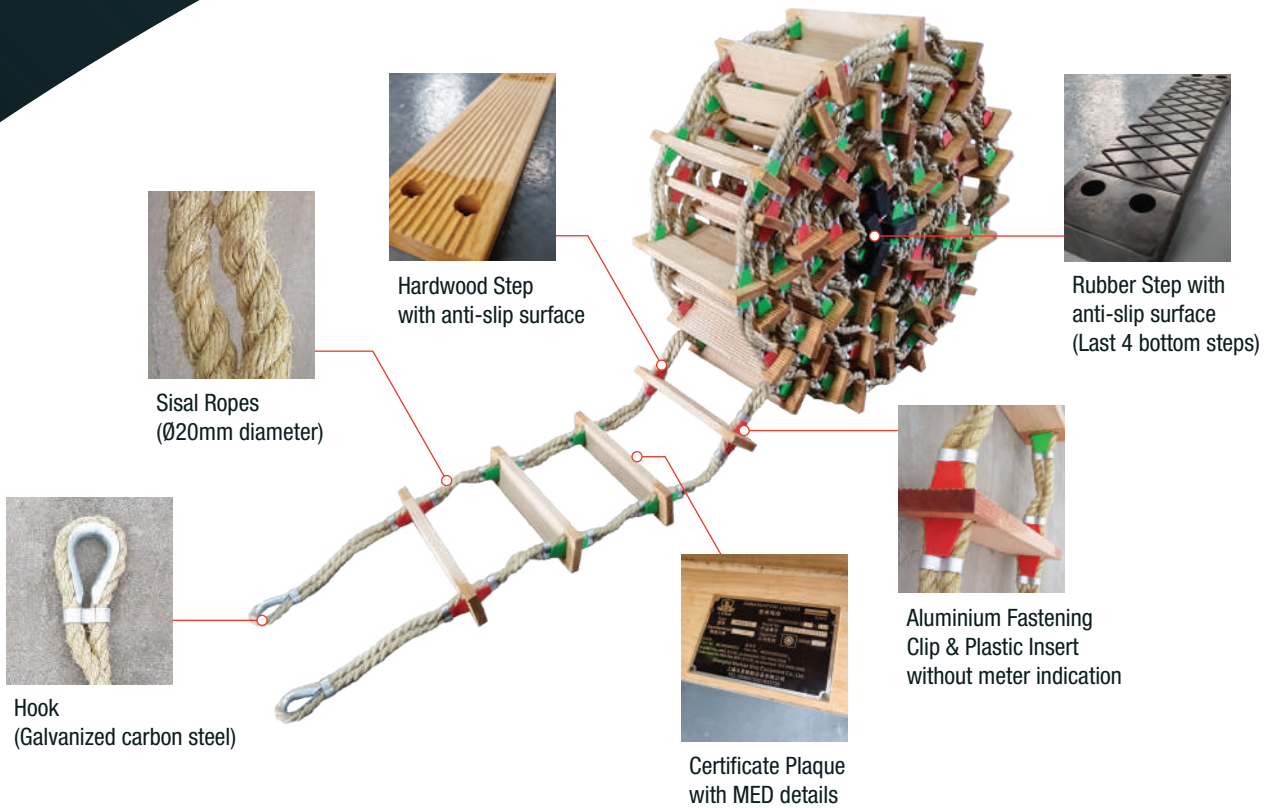
MARINE SAFETY ESSENTIALS

We Offer On-Board Firefighting And Marine Safety Essentials

Disclaimer: Accuracy of all technical data and information are provided to the best knowledge of the manufacturer. Properties, specifications and application parameters are subject to change without notice. The manufacturer does not undertake any liability of any kind whatsoever.

Mars Safety International Pte Ltd is the Singapore Overseas Branch of Dongtai Martian Ship Equipment Co., Ltd.

No.1 Tuas Link 1, Singapore 638583 Tel.: +65 6862 1212 Fax: +65 6897 9959 For Orders, please send enquiry to Sales@mars-safety.com



We Can Fabricate Lengths from 2m to 50m
Please Send Enquiry To Sales@mars-safety.com

Order your custom-length embarkation ladder today and elevate your safety standards! For additional customization, consult with our experts; we tailor to your specifications.

Product Features

- MED/SOLAS approved, met the required standards (ISO 5489:2008).
- Used by the crew to board a lifeboat or used as access to the life rafts during emergencies.
- Steps have non-skid surfaces, secured with sea water resistant aluminium clamps.
- Ropes are not painted, coated or covered, thimbles will be provided.
- Ropes are spliced to top on the ladder.
- All steps are made from hardwood, only bottom 4 steps are made from rubber.

Spare Parts (Separate Order)



Hardwood
Replacement Steps



MARINE SAFETY ESSENTIALS

We Offer On-Board Firefighting And
Marine Safety Essentials

Disclaimer: Accuracy of all technical data and information are provided to the best knowledge of the manufacturer. Properties, specifications and application parameters are subject to change without notice. The manufacturer does not undertake any liability of any kind whatsoever.



Mars Safety International Pte Ltd
The Singapore Overseas Branch of Dongtai Martian Ship Equipment Co., Ltd.

Address: No.1 Tuas Link 1, Singapore 638583
Telephone: +65 68621212
Fax: +65 68979959
Email: sales@mars-safety.com

Embarkation Ladder

Drawing No.: DMSE-EL20180831

Weight:

Proportion:
1:50

Product Model: DMSE-EL

Version No.: A

Page 1 of 1

The production requirements of the ladders are implemented according to the standards:

- 1) Regulation 23, Chapter V of SOLAS 1974, as amended.
- 2) Chapter I and VI of MSC.48(66) International Lifesaving Appliance code (LSA code).
- 3) ISO 5489:2008 Ship and marine technology - Embarkation ladders.
- 4) CB/T428-1993 Embarkation ladder.

Ladder's Parts

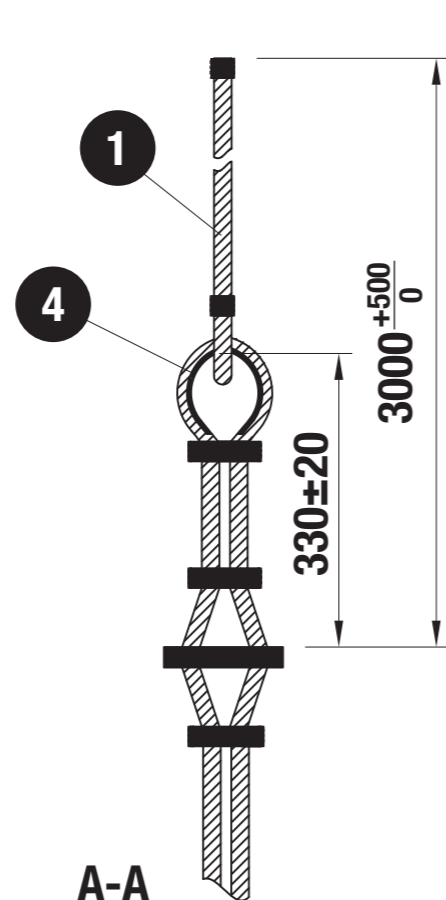
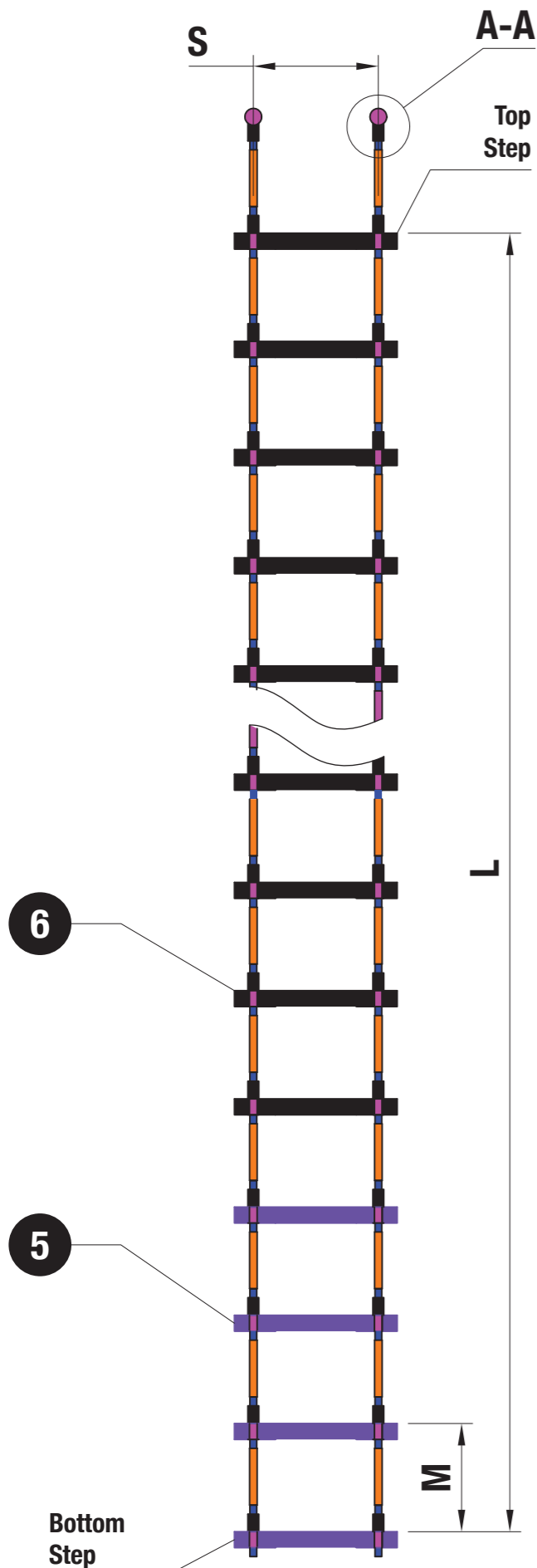
Part No.	Name	Size(mm)	Material
1	Rope	Ø20	Sisal Rope
2	Aluminium Fastening Clip	54 X 48 X 3	Aluminium
3	Plastic Insert	30 X 53 X 47	Polypropylene
4	Hook	116 X 73	Galvanized Carbon Steel
5	Rubber Step	525 X 115 X 40	Rubber
6	Wooden Step	525 X 115 X 28	Wood

Number Of Steps On Ladder

Ladder Length(m)	No.Of Steps	Ladder Length(m)	No.Of Steps	Ladder Length(m)	No.Of Steps	Ladder Length(m)	No.Of Steps
2	7	15	46	28	85	41	124
3	10	16	49	29	88	42	127
4	13	17	52	30	91	43	130
5	16	18	55	31	94	44	133
6	19	19	58	32	97	45	136
7	22	20	61	33	100	46	139
8	25	21	64	34	103	47	142
9	28	22	67	35	106	48	145
10	31	23	70	36	109	49	148
11	34	24	73	37	112	50	151
12	37	25	76	38	115		
13	40	26	79	39	118		
14	43	27	82	40	121		

Notes:

- 1) The lowest four steps of the ladder are made of rubber, while the remaining steps are constructed from wood.
- 2) Along the length of the ladder, beginning from the bottom, a red plastic insert is placed at every 1-meter interval, with green plastic inserts used in the remaining positions to secure the ladder rigging at the desired height.
- 3) The breaking force of the side rope shall not be less than 28kN.



Aluminium fastening clip and Plastic inserts

Ladder's Dimensions

Code	Description	Numerical Value
S	Center distance between ropes on both sides	425mm
M	Distance between each adjacent steps	330±20mm
L	Actual length of the ladder	See ladder specification sheet



Mars Safety International Pte Ltd
The Singapore Overseas Branch of Dongtai Martian Ship Equipment Co., Ltd.

Address: No.1 Tuas Link 1, Singapore 638583
Telephone: +65 68621212
Fax: +65 68979959
Email: sales@mars-safety.com

**Embarkation Ladder
(Parts)**

Drawing No.: DMSE-EL2018083101

Weight:

Proportion:
1:50

Product Model: DMSE-EL

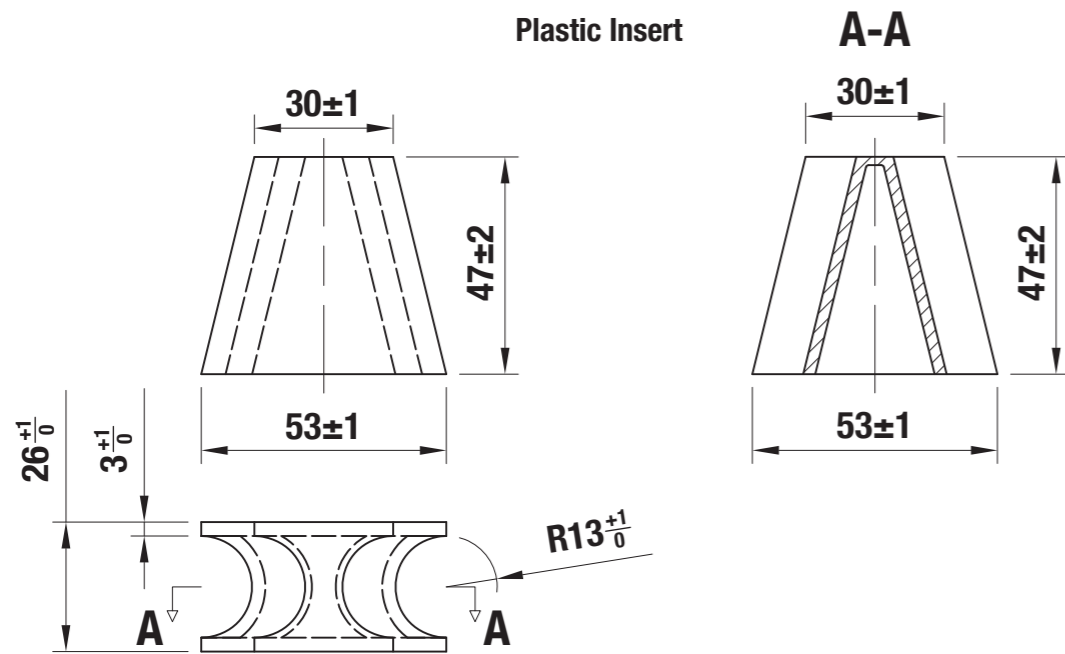
Version No.: A

Page 1 of 1

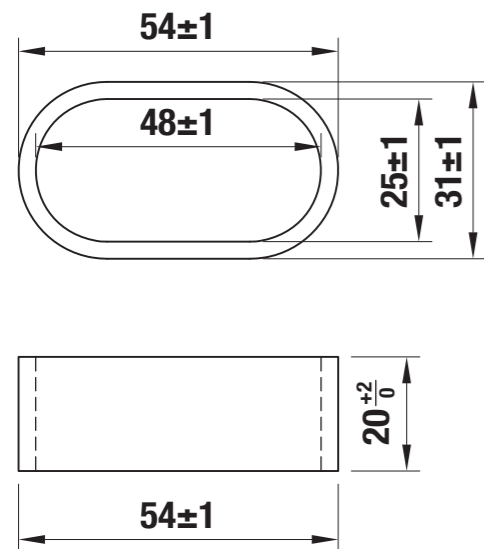
Technical Requirements:

- 1) The size and tolerance of the product should meet the requirements of the drawings.
- 2) The product's surface is free from defects like burrs or cracks that could impact its functional properties.
- 3) The surface of the hook should be treated with hot dip galvanizing, and all parts of the surface should be covered.
- 4) The upper surface of the pedal should be embossed or textured to prevent slipping.
- 5) The corners of the product should be polished.

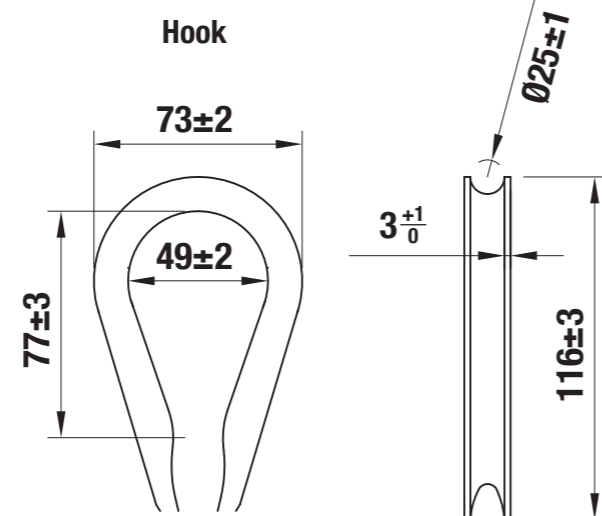
Plastic Insert



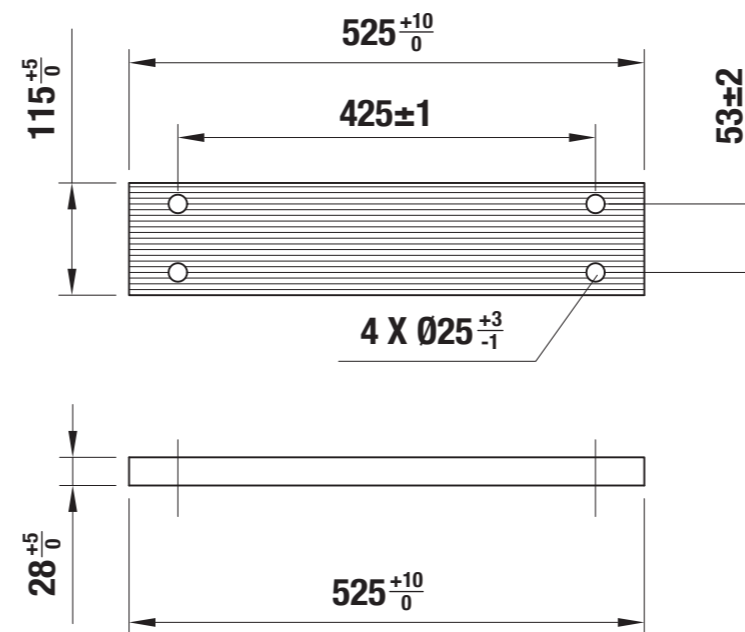
Aluminium Fastening Clip



Hook



Wooden Step



Rubber Step

